







EVENT AND MEETING FACILITIES

ROOM DIMENSIONS AND CAPACITIES

ROOM	DIMENSIONS FT L x W x H	AREA FT ²	 BANQUET STYLE	 BOARDROOM STYLE	 CLASSROOM STYLE	 COCKTAIL RECEPTION	 THEATER STYLE	 U-SHAPED STYLE
Grand Salon Ballroom	96 x 42 x 14	4,032	300	—	200	400	400	90
Salon I	42 x 22 x 14	924	60	32	36	70	70	35
Salon II	42 x 22 x 14	924	60	32	36	70	70	35
Salon III	42 x 22 x 14	924	60	32	36	70	70	35
Salon IV	42 x 30 x 14	1,260	90	40	60	100	90	40
Grand Salon Foyer	71 x 25 x 8.5	2,411	—	—	—	300	—	—
Petite Salon	15.4 x 25 x 8	385	20	15	20	20	20	15
The Office	15 x 10 x 8	150	—	6	—	—	—	—
<hr/>								
Chateau I, II, IX, X	36.6 x 17 x 9	622	40	24	24	40	40	22
Chateau VI	24 x 18 x 9	432	—	12	—	—	—	—
Chateau VII	35 x 18 x 9	630	—	20	—	—	—	—
Chateau VIII	54.6 x 17 x 9	928	60	40	45	75	65	40
Grand Chateau	46.5 x 33 x 8	1,534	90	45	70	140	140	45
Grand Chateau A	29.5 x 33 x 8	973	40	20	30	70	60	20
Grand Chateau B	17 x 33 x 8	561	30	20	18	60	50	20
201, 202, 207, 209, 210	18.6 x 13 x 9	242	—	6	—	—	—	—
<hr/>								
The Glass Lounge	32 x 30 x 12.4	960	60	26	60	90	84	30
<hr/>								
Garden		3,300	200			400	350	



Event and Meeting Information

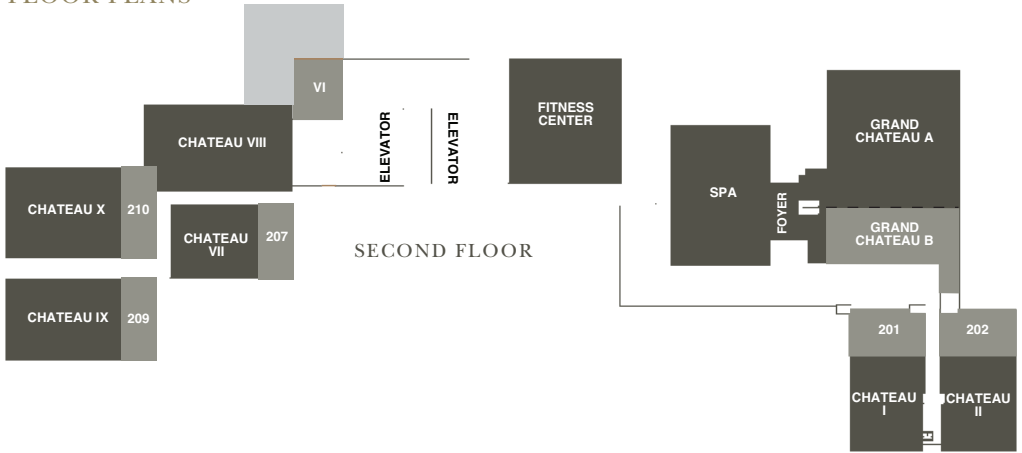
2151 Avenue of the Stars, Los Angeles, CA 90067

Tel: 310 284 6500 Fax: 310 284 6501

Email: lasales@ihg.com

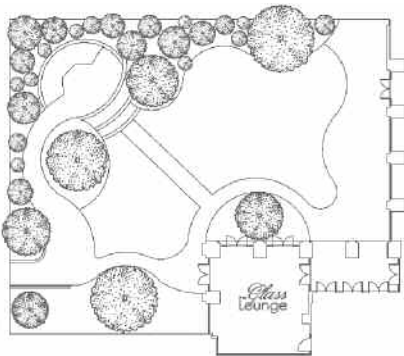
www.intercontinentallosangeles.com • www.intercontinental.com/losangeles

FLOOR PLANS

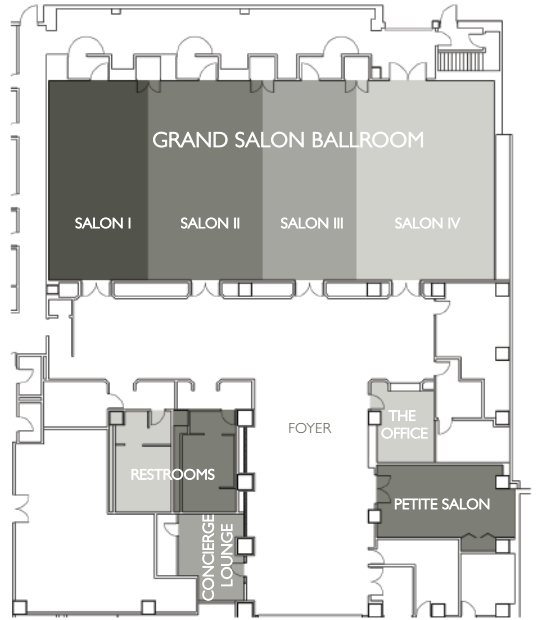


AMENITIES

- High Speed Internet Access (wireless connectivity)
- On-site audio-visual specialists
- Full-service business center
- Boardroom has built in projector and screen along with marble table
- Dedicated meeting and event specialists on hand to ensure successful event



GARDEN & GLASS LOUNGE



GROUND FLOOR

MEETING FACILITIES

16,650 sq ft/1,486 m² of meeting and function facilities accommodating up to 400 guests including 20 function rooms, 1 ballroom, 2 boardrooms and outdoor function space